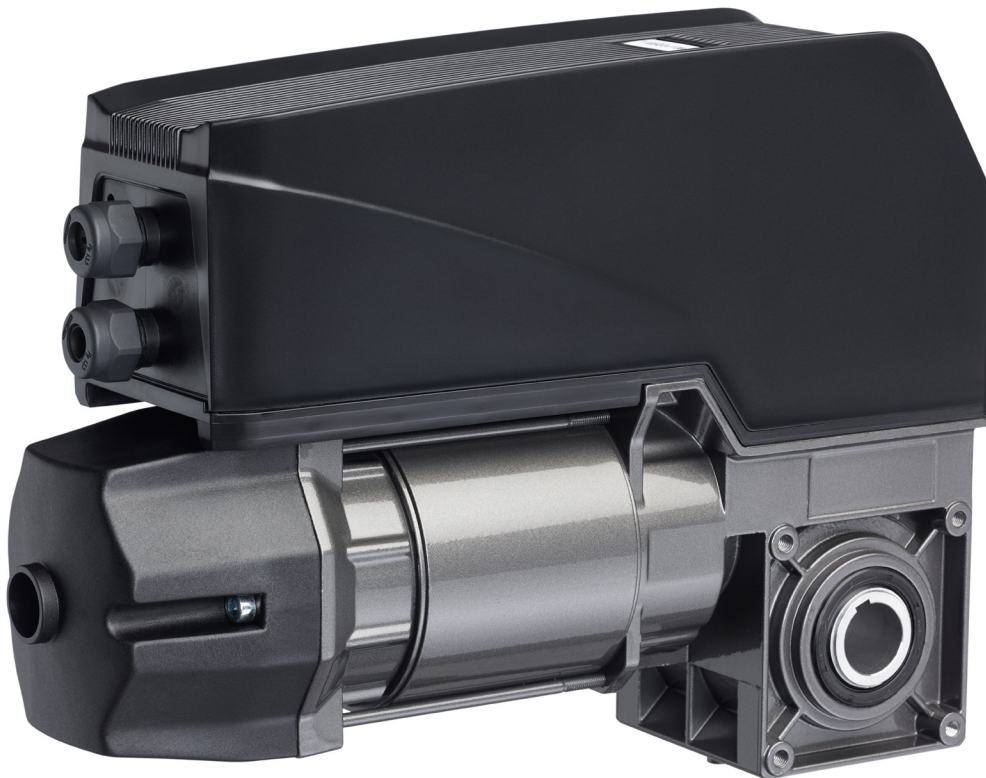


VTA Series

Continuous Duty DC Powered Commercial Direct Drive Door Operators for Spring Balanced Sectional and Rolling Steel Doors.

Model Numbers: 14-61, 11-62, 11-72
Various other models available



Marantec America Corporation
5705 Centerpoint Court
Gurnee, Illinois 60031
tel: 1-847-478-1500
www.marantecamerica.com

VTA 14-61

Up to: 200 sq ft



A balance of power and performance

VTA 11-62

Up to: 270 sq ft



The choice for larger sectional doors

VTA 11-72

Up to: 310 sq ft



Designed for heavier duty applications

Features

- Ultra-quiet DC motor.
- Variable programmable speed levels and onboard instant reverse.
- Soft start & stop, open & close speed eliminates the need for cable tensioner.
- Ideal for all track configurations including outside hookup, low headroom with one change of one setting.
- Can be installed and programmed in minutes.
- Built-in automatic closing with pre-set 15 second intervals or custom time.
- 3 button open-close-stop for standard operation.
- Patented automatic input voltage detection system: 85V to 265V 60Hz, single phase.
- Direct drive operator, shaft side-mount or center-mount installation.
- Electronic limits with absolute encoder
- Battery backup compatible.

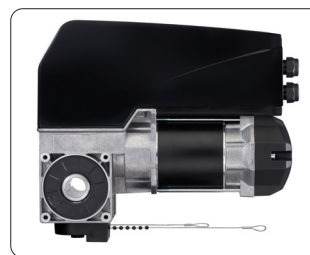
Model Numbers

- 183950** - VTA Starter Set, Keyway, Quick Release (E)
- 183951** - VTA Starter Set, Keyway, Emergency Hand Chain (KE)
- 186533** - Large Door VTA Drive 11-62 w/ Quick Release (E)
- 186532** - Large Door VTA Drive 11-62 w/ Emergency Hand Chain(KE)
- 186267** - Heavy Duty VTA Drive 11-72 w/ Quick Release (E)
- 186268** - Heavy Duty VTA Drive 11-72 w/ Emergency Hand Chain(KE)
- 183259** - Heavy Duty 1.25" Shaft VTA Drive 11-72 w/ Quick Release (E)
- 186258** - Heavy Duty 1.25" Shaft VTA Drive 11-72 w/ Emergency Hand Chain(KE)

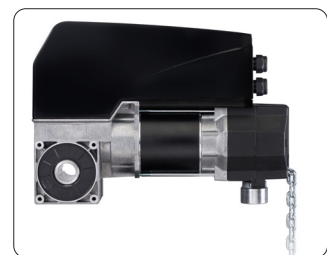
 Backed by our **2 Years or 40,000 Cycles Warranty**



I.C./ F.C.C. Certified



Quick Release(E)

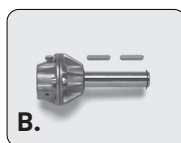


Emergency Hand Chain(KE)

Technical Data
(E) = Quick Release Model
(KE) = Emergency Chain Hoist Model

Description	VTA 14-61	VTA 11-62	VTA 11-72
Item No: 1 in Shaft Diam (E)	183950	186533	186267
Item No: 1 in Shaft Diam (KE)	183951	186532	186268
Item No: 1.25 in Shaft Diam (E)	-	-	186529
Item No: 1.25 in Shaft Diam (KE)	-	-	186528
Dimensions (E KE)	4.1x10.1x11.1 14.9 (in)	4.1x10.9x14.1 15.7 (in)	4.1x10.9x14.1 15.7 (in)
Drive Shaft Type	Hollow or Solid	Solid	Solid
Output Torque	25 Nm	35 Nm	45 Nm
Static Holding Torque	897 lbs	1346 lbs	1346 lbs
Motor RPM	24 min-1	24 min-1	19 min-1
Max Door Size	200	270	310
Max Drum Size (diam)	6.3 in	8.9 in	8.9 in
Max Cycles (up/down) per hour	20	20	20
Max Cycles (up/down) per day	450	450	450
Emergency Operation	E KE	E KE	E KE
Power Specs	84-265, 1 Phase, 60Hz	84-265, 1 Phase, 60Hz	84-265, 1 Phase, 60Hz
Switching Power Supply	1	2	2
Current Rating (Amps)	1.1 - 2.5A	2.2A	2.2A
DC Power Out	24V	24V	24V
Circuit Amps	16A	16A	16A

Accessories



Item **Part No.** **Description**

A 158766 315 MHz Remote Activation Kit



B 64976 Drive Shaft Adapter - Keyed Solid Shaft 1"

C 185016 Industrial Photo Eyes
Indoor use, NEMA 1 rated, max. range of 30 ft.



D 185017 NEMA 4x Photo Eyes
Flexible rubber housings resist water spray/ corrosion;
indoor/outdoor use, IP65 rated; max range of 45 ft.

E 187764 Battery Backup 700 24VDC 7 AH with Mounting Bracket

F 159261 Signal Light 950 - Amber

G 148414 Light 100 Red/Green Traffic Light (Not Pictured)

Operator Dimensions

Legend	VTA 14-61(E) Quick Release	VTA 14-61(KE) Emergency Chain Hoist	VTA 11-62(E) Quick Release	VTA 11-62(KE) Emergency Chain Hoist	VTA 11-72(E) Quick Release	VTA 11-72(KE) Emergency Chain Hoist
A	0.25	0.25	0.25	0.25	0.25	0.25
B	0.08	0.08	0.14	0.14	0.14	0.14
C	1	1	1	1	1 or 1.25	1 or 1.25
D	10.16	10.16	10.91	10.91	10.91	10.91
E	4.74	4.74	5.51	5.51	5.51	5.51
F	3.37	3.37	4.13	4.13	4.13	4.13
G	1.79	1.79	2.17	2.17	2.17	2.17
H	4.25	4.25	4.72	4.72	4.72	4.72
I	0.98	N/A	N/A	N/A	N/A	N/A
J	1.79	1.79	2.17	2.17	2.17	2.17
K	3.62	3.62	4.25	4.25	4.25	4.25
L	5.81	5.81	5.71	5.71	11.93	5.71
M	12.03	12.03	11.93	11.93	13.9	11.93
N	4.09	4.09	4.09	4.09	4.09	4.09
O	13.23	13.23	13.23	13.23	13.23	13.23
P	14.09	N/A	14.09	N/A	14.09	N/A
Q	N/A	3.94	3.94	3.94	3.94	3.94
R	N/A	N/A	13.9	N/A	13.9	N/A
S	N/A	15.67	N/A	15.67	N/A	15.67

